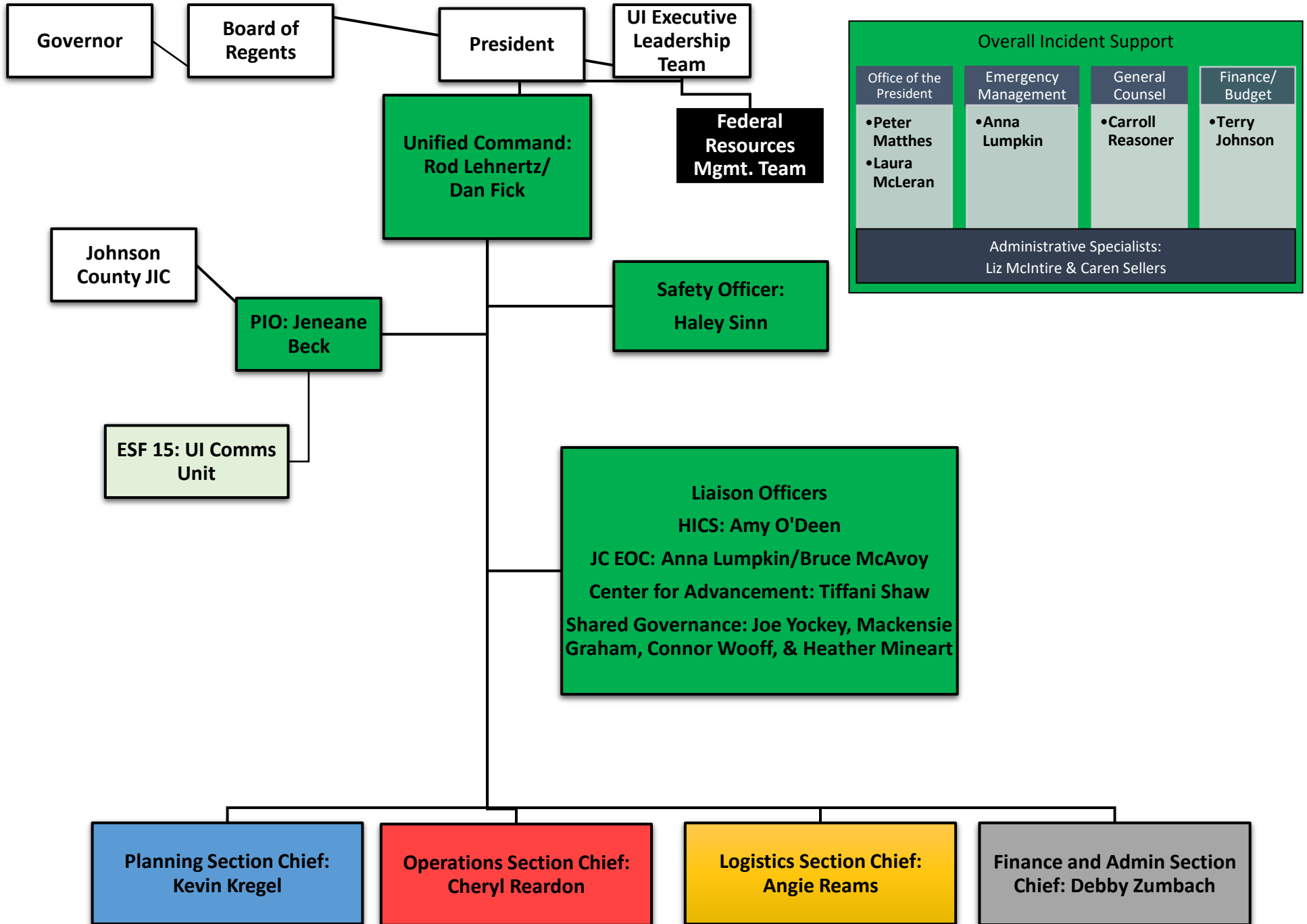
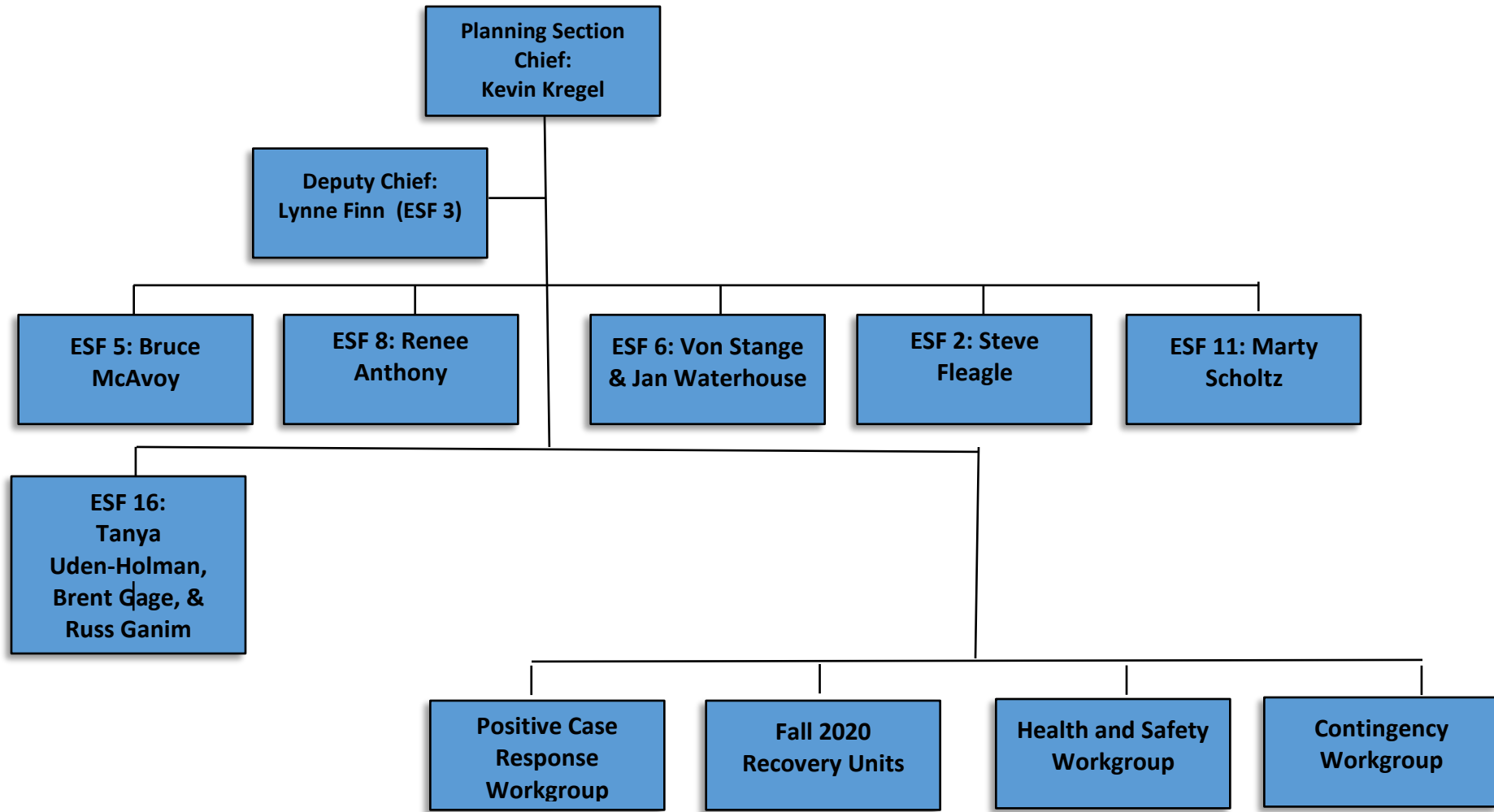
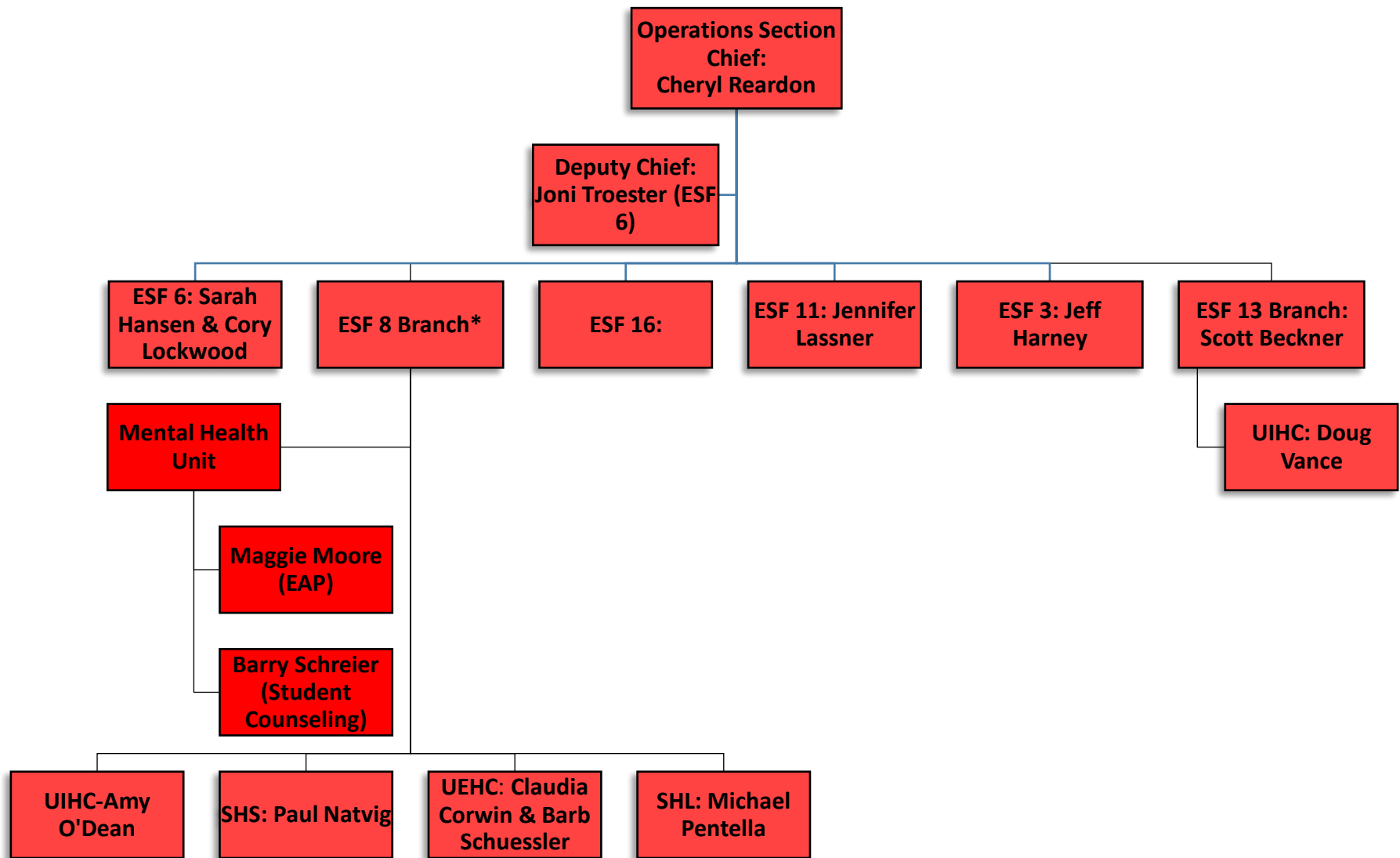


UI COVID-19 RESPONSE

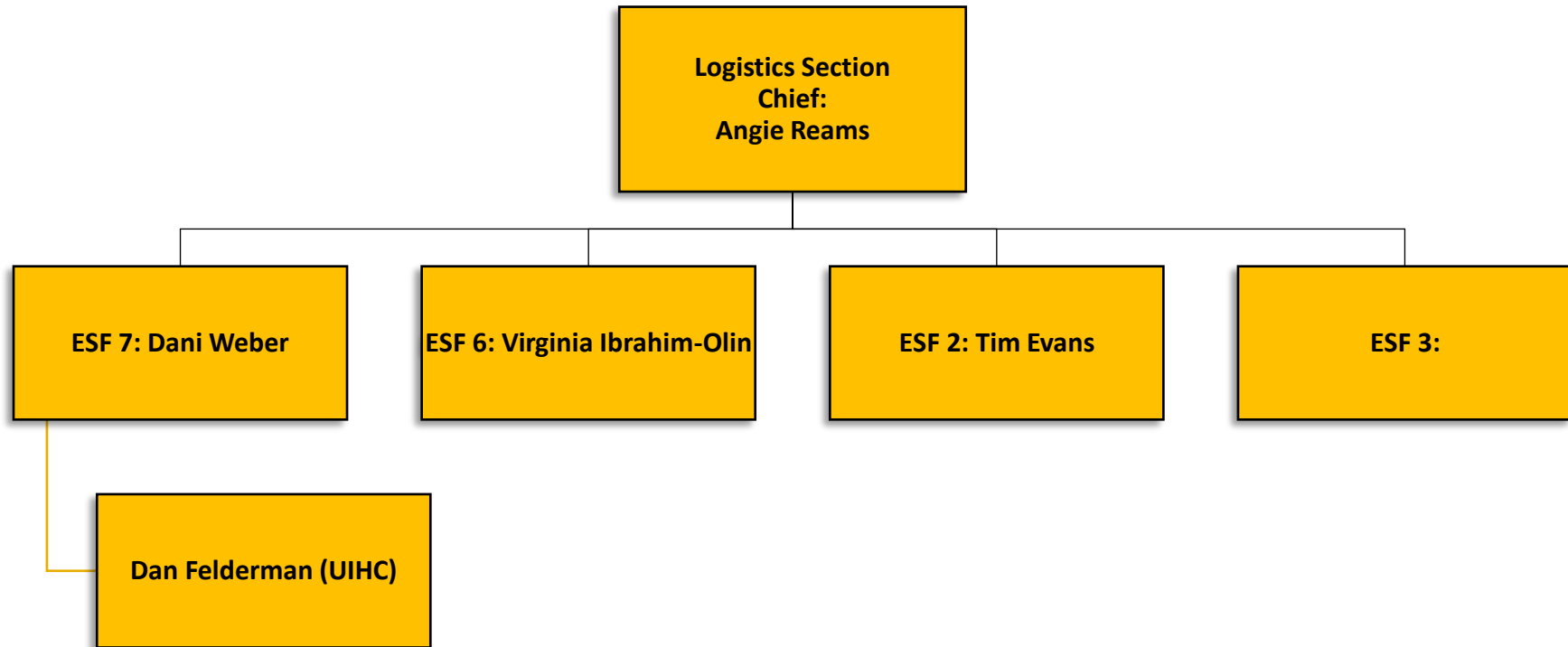


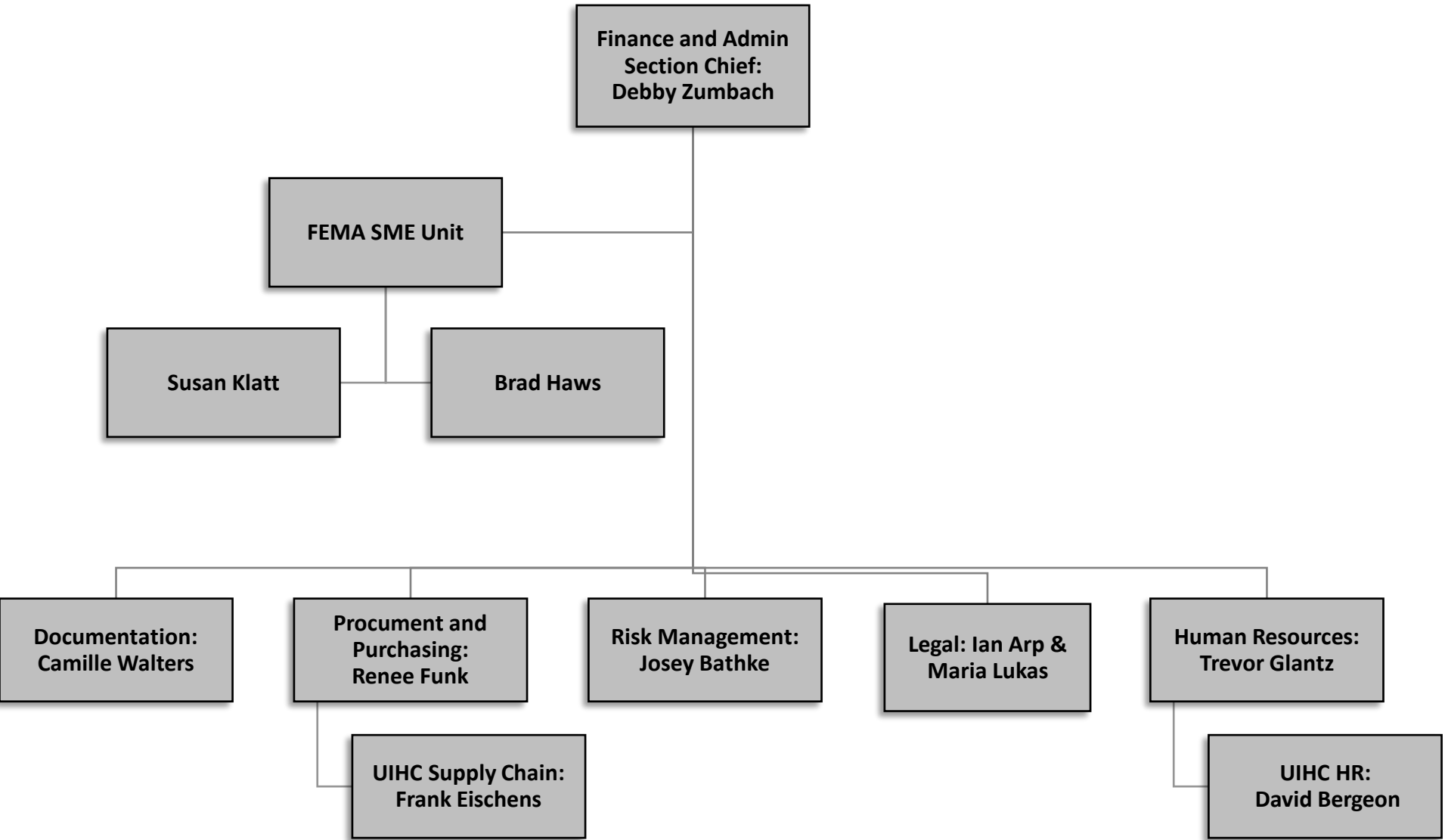


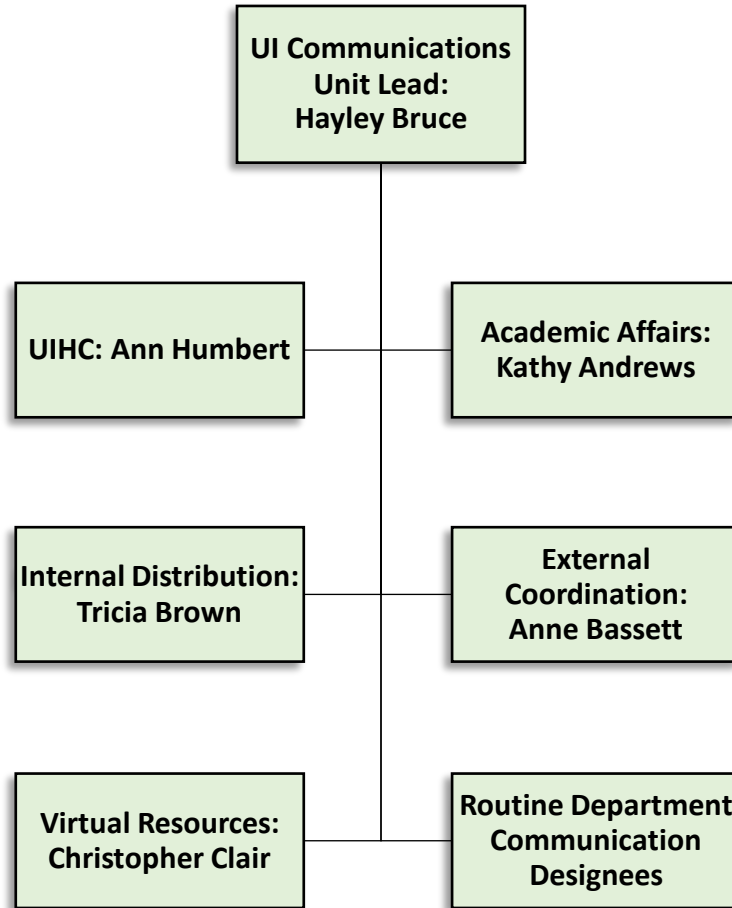
# UI COVID-19 RESPONSE

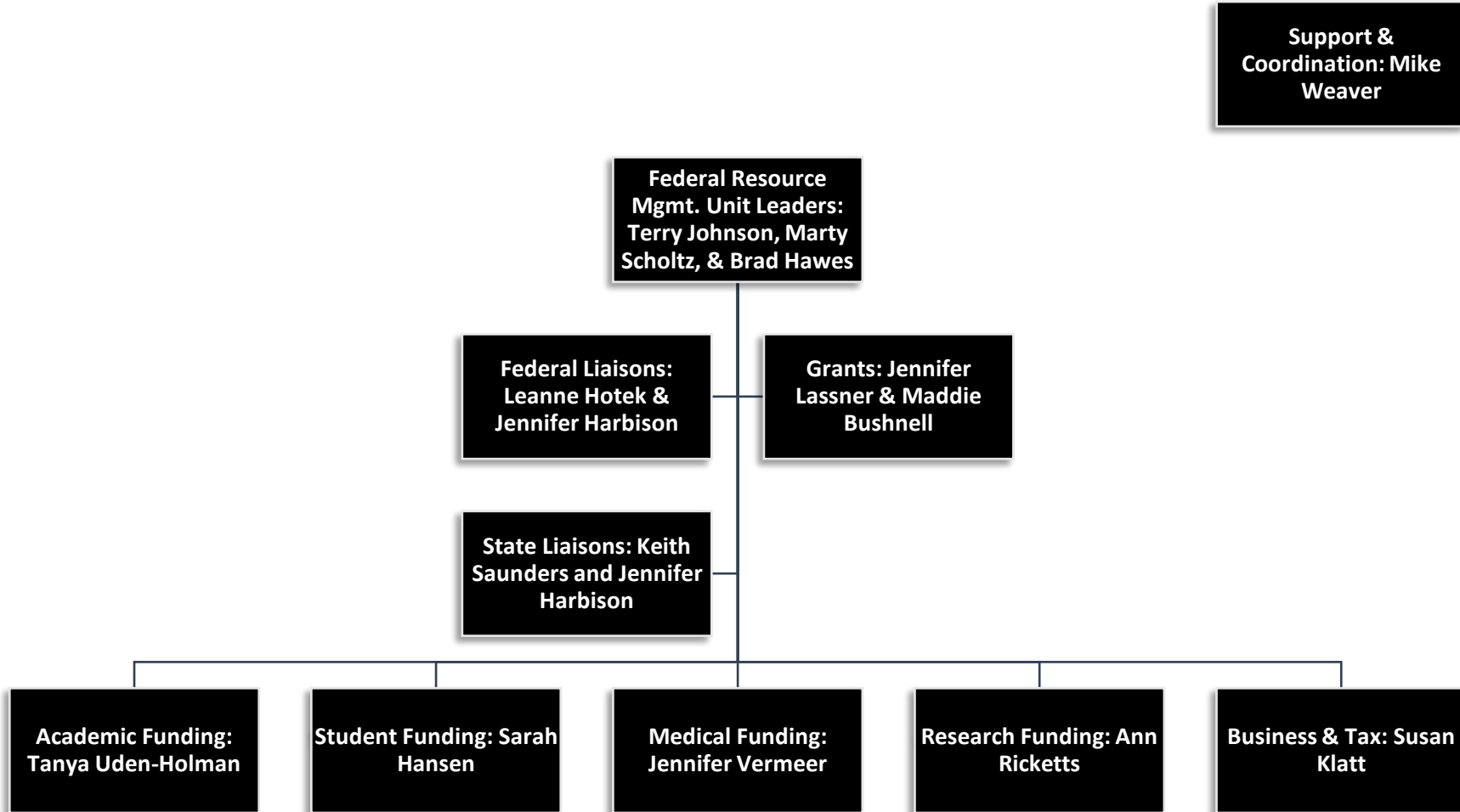


\*Medical Entities will report/operate based on their standard protocols, as applicable, as it relates to healthcare delivery.









Primary units fulfilling Emergency Support Function (ESF) may differ slightly due to the unique pandemic circumstances.

- ESF 1: Transportation and Roadways
  - Parking and Transportation
- ESF 2: Communications
  - Information Technology Systems
  - Department of Public Safety
  - Office of Strategic Communications
- ESF 3: Public Works and Engineering
  - Facilities Management
- ESF 4: Firefighting
  - Department of Public Safety
  - Fire Safety
- ESF 5: Emergency Management
  - Emergency Management
- ESF 6: Mass Care, Emergency Assistance, Housing, Human Services
  - Student Life
  - Human Resources
- ESF 7: Logistics Management, Resource Support and Finance
  - Finance
  - Business Services
  - Student Life
- ESF 8: Public Health, Mental Health, and Medical Services
  - UIHC
- Student Health
- Human Resources
- ESF 9: Search and Rescue
  - Department of Public Safety
- ESF 10: Hazardous Materials Response
  - Environmental Health and Safety
- ESF 11: Research and Animal Care
  - Research
- ESF 12: Energy
  - Facilities Management
- ESF 13: Law Enforcement and Security
  - Department of Public Safety
  - UIHC Safety and Security
- ESF 14: Long-term Recovery
  - Risk Management
- ESF 15: External Affairs, Media Relations and Community Outreach
  - Office of Strategic Communications
  - Office of the President
- ESF 16 Academics
  - Provost Office
  - Student Government
  - Faculty Senate